

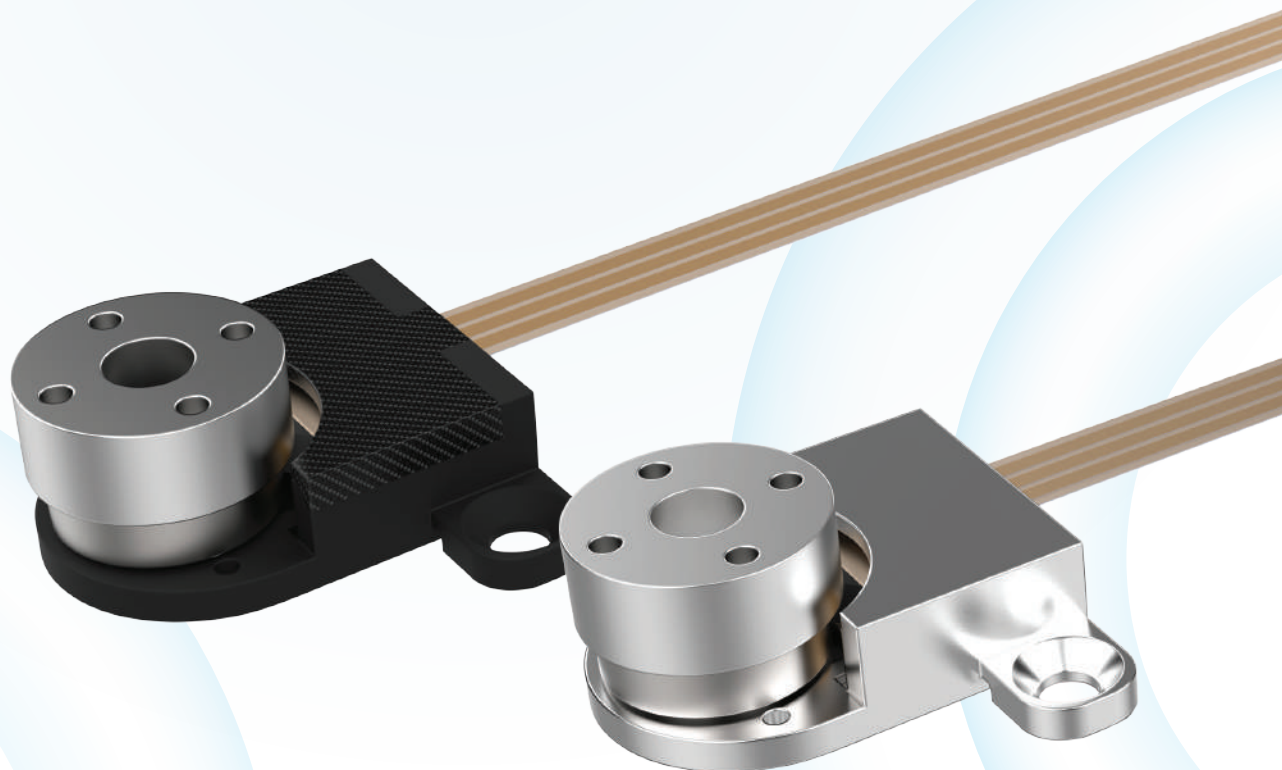


www.piezomotors.com

ROMO Series

Piezoelectric Rotary Motors

Innovation In The Design And
Manufacturing Of Piezoelectric Motors





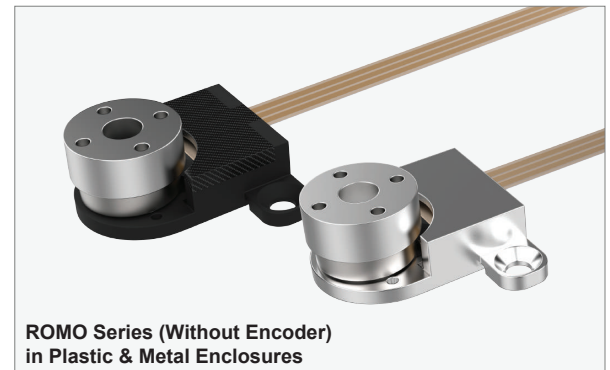
CONTACT US:
Tel. +1 855 600 9666
sales@piezomotors.com
www.piezomotors.com
Boca Raton, FL 33496

ROMO Series

Piezoelectric Rotary Motors

INTRODUCTION

Piezo Motor Company's ROMO Series represents a new generation of compact, lightweight hollow-shaft rotary piezoelectric actuators. Built on a US-patented ultrasonic standing wave technology, the ROMO delivers unmatched angular precision, ultra-fast response, and high torque in a miniature form factor - available in engineered thermoplastic or machined anodized aluminum enclosures, with or without encoder. The ROMO is also available in non-magnetic MRI-compatible materials.

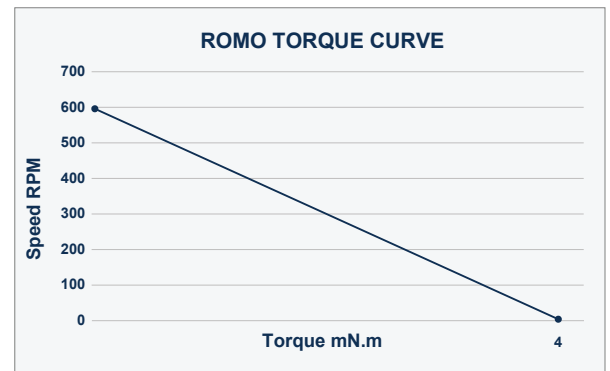


ROMO Series (Without Encoder)
in Plastic & Metal Enclosures

PRINCIPLE OF OPERATION

US Patent Number 12,143,036

The ROMO rotary piezo actuator operates based on a US patented technology. Electrical excitation of its piezoceramic body, or resonator, induces simultaneously two independent longitudinal and bending ultrasonic standing waves in two perpendicular directions. This action generates elliptical vibrations at the resonator's center, resulting in rotary motion of the motor, which is passively in contact with the resonator body.



PERFORMANCE & BENEFITS

- Superior stability of velocity control
- Flexible PCB electrical connection facilitates system integration
- Unmatched precision and resolution
- Silent operation and low voltage
- Ultra-fast response times and exceptional start-stop capabilities
- High torque relative to size, optimized for direct-drive applications
- Stepping and continuous modes of operation
- Hollow shaft with 2.5 mm I.D. (\approx 11.5 mm O.D.)

KEY FEATURES

- Hollow shaft design
- Ultra-fast response ($\sim 30 \mu\text{s}$)
- High torque relative to size
- Silent operation
- Stepping and continuous modes
- Low voltage operation (5–7.5 V DC)



ROMO

Open Loop Rotary Piezo Motor

Hollow Shaft Rotary | Plastic & Metal Enclosures | No Encoder



ROMO-P Series (Without Encoder)
Plastic Enclosures



ROMO-M Series (Without Encoder)
Metal Enclosures

INTRODUCTION

Hollow-shaft rotary piezoelectric actuator, open-loop PWM control. Available in plastic (ROMO-P) or machined anodized aluminum (ROMO-M) enclosure.

MOTOR SPECIFICATIONS

Power Supply Voltage	7.5 V DC
Stall Torque	≥ 4 mNm
Self-Braking Torque	≥ 5 mNm
Actuator Response Time	< 30 μ s
Max Speed	> 600 rpm
Minimum Angular Step	30 μ rad
Angular Backlash	30 μ rad
Angular Hysteresis	30 μ rad
Frequency Response	4 KHz
Operating Temperature	-20 °C to 80 °C
Maximum Axial Load	200 g
Maximum Radial Load	200 g
Moment of Inertia	29.2 g·mm ²
Max Current over velocity range	300 mA
Rotor Runout	≤ 50 μ m

DIMENSIONS & WEIGHT

Actuator Dimensions (no shaft)	$13 \times 18.7 \times 8.15$ mm
Actuator Weight	3.5 g / 4.0 g
Driver PCB Dimensions	$28 \times 28 \times 9.6$ mm
Driver PCB Weight	4.3 g

ORDERING INFORMATION

Model	Enclosure	Encoder	Part Number	Kit Number*
ROMO-P	Plastic	No	ROMO-P011-0370-0000	ROMO-P011-0371-0000
ROMO-M	Metal	No	ROMO-M012-0370-0000	ROMO-M012-0371-0000

*Evaluation kit includes motor, driver PCB, cables and 120/240 V AC to 7.5 V DC power adapter.

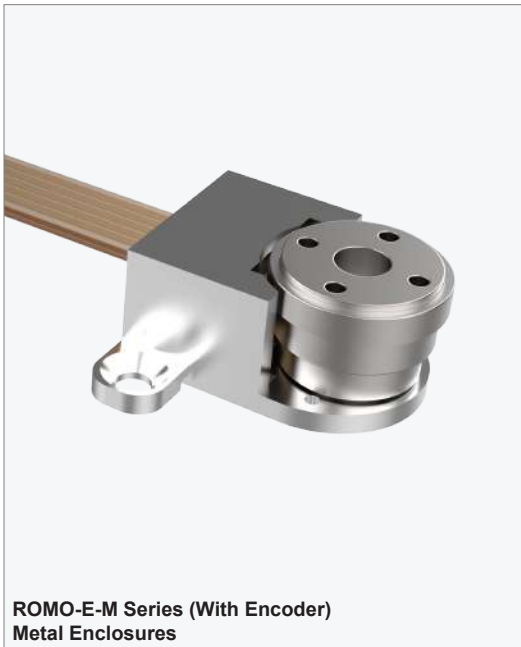
ROMO-E

Rotary Piezo Motor with Encoder

Piezoelectric Hollow Shaft Rotary | Plastic & Metal Enclosures | With Encoder



ROMO-E-P Series (With Encoder)
Plastic Enclosures



ROMO-E-M Series (With Encoder)
Metal Enclosures

INTRODUCTION

Identical to ROMO base motor with factory-fitted magnetic encoder. Encoder signal output enables closed-loop control via your controller. Plastic (ROMO-E-P) or anodized aluminum (ROMO-E-M) enclosure.

MOTOR SPECIFICATIONS

Power Supply Voltage	7.5 V DC
Stall Torque	≥ 4 mNm
Self-Braking Torque	≥ 5 mNm
Actuator Response Time	< 30 μ s
Max Speed	> 600 rpm
Minimum Angular Step	< 30 μ rad
Encoder Resolution (after quadrature)	1,024 ppr
Minimum Controlled Angular Step	6.1 mrad
Uni-directional Repeatability	6.1 mrad
Angular Backlash	30 μ rad
Angular Hysteresis	30 μ rad
Frequency Response	4 kHz
Operating Temperature	-20 °C to 80 °C
Maximum Axial Load	200 g
Maximum Radial Load	200 g
Moment of Inertia	29.2 g·mm ²
Max Current over velocity range	300 mA
Rotor Runout	≤ 50 μ m

DIMENSIONS & WEIGHT

Actuator Dimensions (no shaft)	13 x 18.7 x 9.15 mm
Actuator Weight	4.2g / 5.2g
Driver PCB Dimensions	28x28x9.6 mm
Driver PCB Weight	4.3 g

ORDERING INFORMATION

Model	Enclosure	Encoder	Part Number	Kit Number*
ROMO-E-P	Plastic	Yes	ROMO-P011-1370-0000	ROMO-P011-1371-0000
ROMO-E-M	Metal	Yes	ROMO-M012-1370-0000	ROMO-M012-1371-0000

*Evaluation kit includes motor, driver PCB, cables and 120/240 V AC to 7.5 V DC power adapter.

ROMO-E-CL

Rotary Piezo Motor System with Closed-Loop Software



Piezoelectric Hollow Shaft Rotary | Plastic & Metal Enclosures | With Encoder



ROMO-E-P-CL (With Encoder) Plastic Enclosure
ROMO-E-M-CL Series (With Encoder) Metal Enclosures

INTRODUCTION

Fully integrated closed-loop system. Combines the ROMO-E encoder motor with PMC's dedicated closed-loop driver PCB and Python API software. Position and velocity commands via USB. Plastic or anodized aluminum enclosure.

MOTOR SPECIFICATIONS

Power Supply Voltage	5 V DC
Stall Torque	≥ 4 mNm
Self-Braking Torque	≥ 5 mNm
Actuator Response Time	< 30 μ s
Max Speed	> 600 rpm
Minimum Angular Step	< 30 μ rad
Encoder Resolution (after quadrature)	1,024 ppr
Minimum Controlled Angular Step	6.1 mrad
Uni-directional Repeatability	6.1 mrad
Angular Backlash	30 μ rad
Angular Hysteresis	30 μ rad
Frequency Response	4 kHz
Operating Temperature	-20 °C to 80 °C
Maximum Axial Load	200 g
Maximum Radial Load	200 g
Moment of Inertia	29.2 g·mm ²
Max Current over velocity range	300 mA
Rotor Runout	≤ 50 μ m

DIMENSIONS & WEIGHT

Actuator Dimensions (no shaft)	13 x 18.7 x 9.15 mm
Actuator Weight	4.2g / 5.2g
Driver PCB Dimensions	28x28x9.6 mm
Driver PCB Weight	4.3 g

EXAMPLE PYTHON API COMMANDS

Home(direction)

Move to zero (CW / CCW)

getPosition()

Read position in encoder pulses

Velocity(value)

Set speed: 0.2 – 600 RPM

Move(action)

Move Left / Right / Stop

Position(value)

Go to absolute position (pulses)

setPWMsettings(dc, freq)

Configure velocity via PWM

ORDERING INFORMATION

Model	Enclosure	Encoder	Part Number	Kit Number*
ROMO-E-P-CL	Plastic	Yes	ROMO-P011-1281-0000	ROMO-P011-1281-0000
ROMO-E-M-CL	Metal	Yes	ROMO-M012-1281-0000	ROMO-M012-1281-0000

*Evaluation kit includes motor, driver PCB, USB cable and Python API software.

ROMO Motion Control and Driver Electronics

PWM | UART | I²C | Open-loop & Closed-loop



INTRODUCTION

The ROMO electronic driver is designed to offer an economical interface for user control. Motion of the motor is achieved via PWM (Pulse Width Modulation) control signals via the J1 connector on the driver. The driver PCB also supports UART and I²C interfaces. Each driver PCB is pre-programmed for the specific motor model and allows for software configurability, optimizing drive signals and integrating controls. Motor operation can be finely regulated through closed-loop control using an optional encoder factory-installed on the actuator.

ROMO OPEN LOOP DRIVER PCB OPTIONS

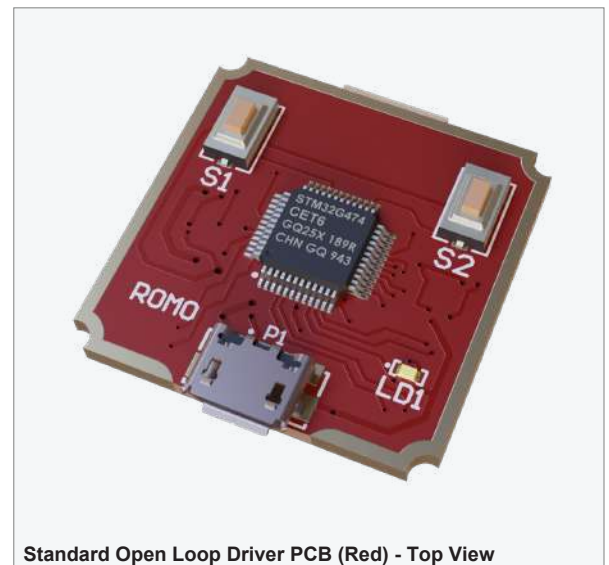
Standard Open Loop Driver PCB (Red) For Single Channel Control

Part No.: ROLR-PPCB-0370-0000

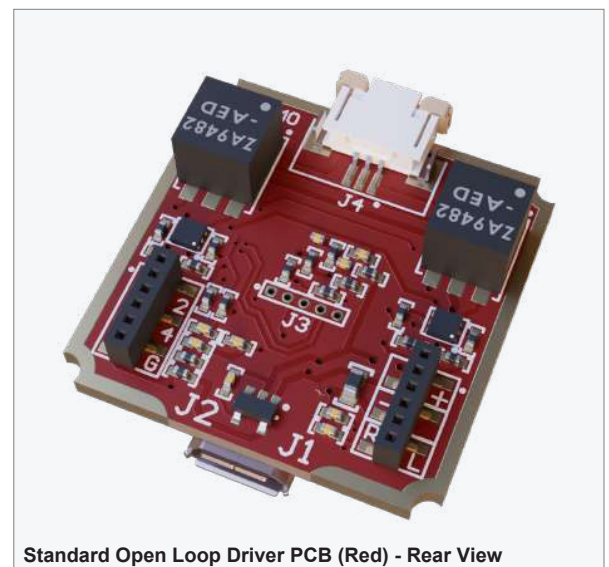
PMC's **Open-Loop RED Driver PCB** provides open-loop motor control without positional feedback. Drive current is automatically stabilized to compensate for temperature and load variations.

The ROMO RED driver PCB is **available in two variants**: a **standard single-channel version** for controlling one motor, and an I²C-enabled version with full I²C **functionality for multi-channel (multi-motor) control**.

The ROMO RED driver PCB is compatible with both ROMO (non-encoder) and ROMO-E (encoder-equipped) motors. For applications requiring closed-loop control with the RED driver, the control loop must be implemented externally by the user using encoder feedback and a third-party controller.



Standard Open Loop Driver PCB (Red) - Top View



Standard Open Loop Driver PCB (Red) - Rear View

Control Interfaces

PWM (TTL-compatible)	via J1 connector
UART	Serial commands via J2 connector
I ² C (Single-channel Control)	Serial commands via J2 connector

Each PCB is factory-configured for the selected serial interface.

Additional Features:

- Manual control via two onboard push-buttons.
- Compact, low-overhead solution for cost-sensitive for open-loop applications using a single motor.

ROMO Motion Control and Driver Electronics

PWM | UART | I²C | Open-loop & Closed-loop



ROMO I²C Open-Loop Driver PCB (Red) For Multi-Channel Control

Part No.: ROLR-PPCB-0250-000

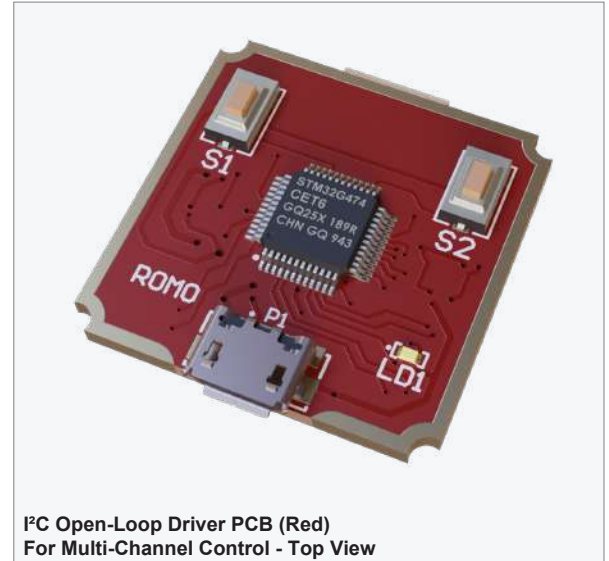
PMC's I²C RED driver PCB provides open-loop motor control without positional feedback using an I²C communication interface, enabling synchronized multi-axis operation. Drive current is automatically stabilized against temperature and load variations.

Control Interfaces

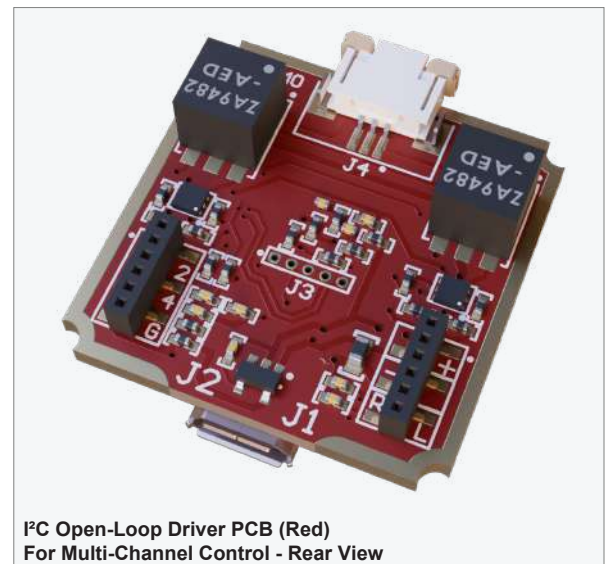
I ² C	Serial communication via J2 connector <ul style="list-style-type: none">◦ SCL – clock line◦ SDA – data line
------------------	--

Additional Features:

- Enables full I²C functionality with support for multiple driver PCBs on a shared bus.
- Unique, configurable I²C addresses per driver.
- Control of multiple motors.
- Compatible with PMC I²C adapter board.
- Scalable via daisy-chaining for multi-axis systems.
- Ideal for multi-axis, synchronized, or distributed motion control.



I²C Open-Loop Driver PCB (Red)
For Multi-Channel Control - Top View



I²C Open-Loop Driver PCB (Red)
For Multi-Channel Control - Rear View

ROMO Motion Control and Driver Electronics

PWM | UART | I²C | Open-loop & Closed-loop



ROMO CLOSED LOOP DRIVER PCB OPTIONS

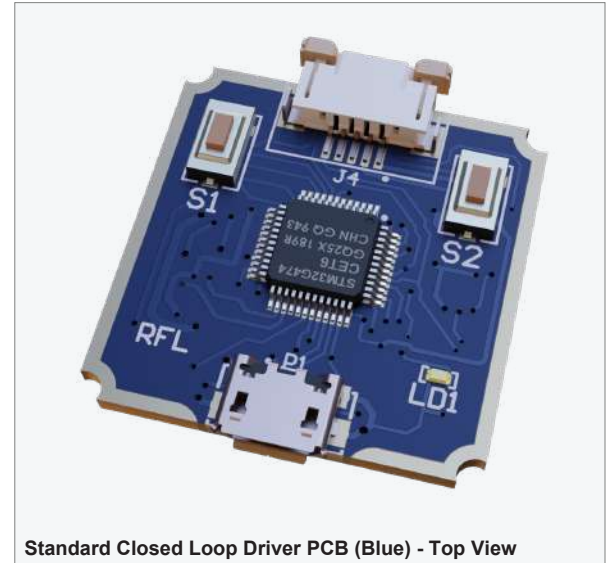
Standard Closed Loop Driver PCB (Blue) For Single Channel Control

Part No.: ROMO-PPCB-1280-0000

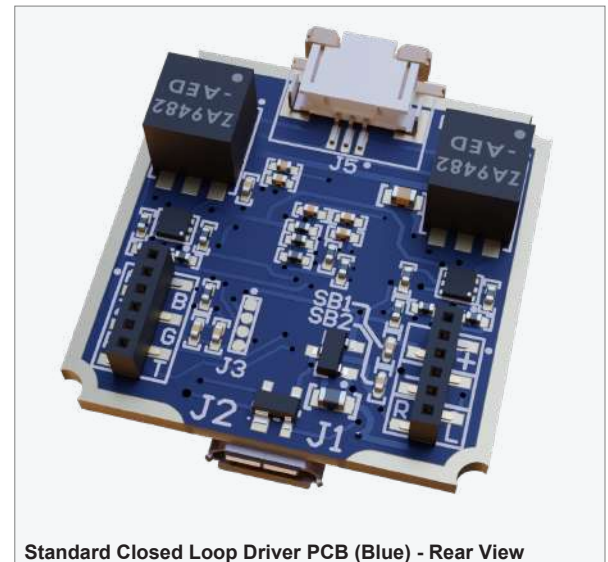
PMC's **Closed-Loop BLUE Driver PCB** provides precise motor control using positional feedback from an encoder. Drive current is automatically stabilized to compensate for temperature and load variations.

The BLUE driver PCB is **available in two variants: a standard single-channel version** for controlling one motor, and an I²C-enabled version with full I²C functionality for **multi-channel (multi-motor) control**.

The BLUE driver PCB is compatible with ROMO-E (encoder-equipped) motors only and is designed for use with PMC's Python™ API, enabling simple integration and high-precision motion control.



Standard Closed Loop Driver PCB (Blue) - Top View



Standard Closed Loop Driver PCB (Blue) - Rear View

Control Interfaces

PMC Python™ API

- Closed-loop control is executed onboard.
- Position and speed commands are issued via the Python™ API.
- Connection via Micro-USB.
- No external motion controller required.

UART Serial commands via J2 connector.

Additional Features:

- Manual control via two onboard push-buttons.
- Compact, low-overhead solution for cost-sensitive for open-loop applications using a single motor.

ROMO Motion Control and Driver Electronics

PWM | UART | I²C | Open-loop & Closed-loop



ROMO CLOSED LOOP DRIVER PCB OPTIONS

I²C Closed-Loop Driver PCB For Multi-Channel Control

Part No.: ROMO-PPCB-1260-0000

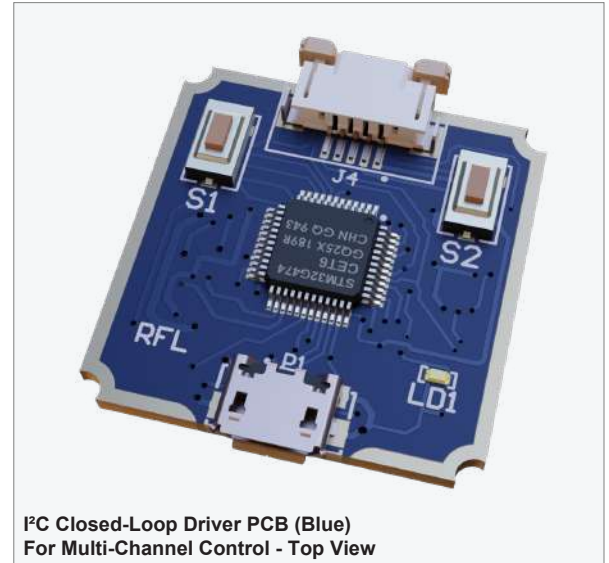
PMC's I²C BLUE driver PCB provides closed-loop control with encoder feedback using an I²C communication interface, enabling synchronized multi-axis operation. Drive current is automatically stabilized against temperature and load variations.

Control Interfaces

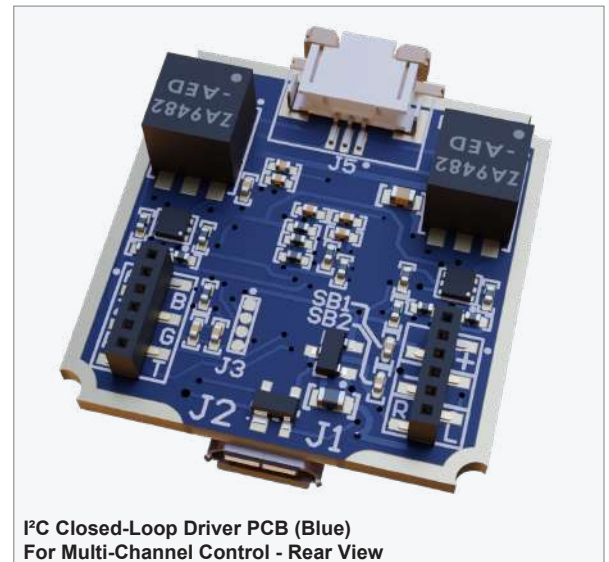
I ² C	Serial communication via J2 connector <ul style="list-style-type: none">◦ SCL – clock line◦ SDA – data line
------------------	--

Additional Features:

- Enables full I²C functionality with support for multiple driver PCBs on a shared bus.
- Unique, configurable I²C addresses per driver.
- Control of multiple motors.
- Compatible with PMC I²C adapter board.
- Scalable via daisy-chaining for multi-axis systems.
- Ideal for multi-axis, synchronized, or distributed motion control.



I²C Closed-Loop Driver PCB (Blue)
For Multi-Channel Control - Top View



I²C Closed-Loop Driver PCB (Blue)
For Multi-Channel Control - Rear View

ROMO Motion Control and Driver Electronics

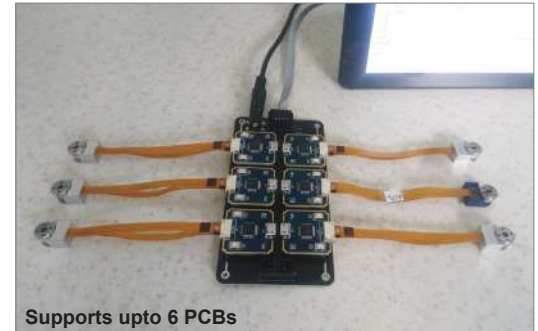
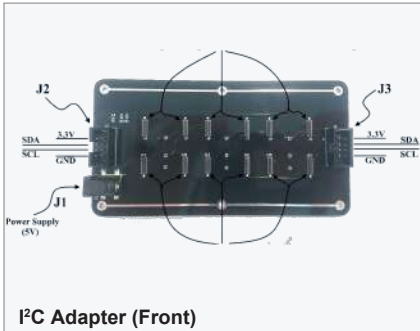
PWM | UART | I²C | Open-loop & Closed-loop



I²C ADAPTER

For use with up to six (6) I²C Red or I²C Blue Driver PCB for Open-Loop Control or Closed-Loop control.

Part Number: **I2CX-PPCB-0290-0000**



ROMO DRIVER PCB SPECIFICATIONS AND CONTROL ARCHITECTURE

Open Loop	Standard Open-Loop (Red)	I ² C Driver Open-Loop (Red)
Key Feature	Basic open-loop	Multi-channel, daisy-chainable*
Control Interface	PWM / UART / Control I ² C	I ² C (Multi-channel functionality)
Applicable on Models	ROMO-P, ROMO-M, ROMO-E-P, ROMO-E-M	ROMO-P, ROMO-M, ROMO-E-P, ROMO-E-M
Part Number	ROLR-PPCB-0370-0000	ROLR-PPCB-0250-000

Closed-Loop	Standard Closed-Loop (Blue)	I ² C Driver Closed-Loop (Blue)
Key Feature	Closed-loop, USB, single channel control	Closed-loop multi-channel, USB, daisy-chainable*
Control Interface	Python API / UART	I ² C (Multi-channel functionality)
Applicable on Models	ROMO-E-P, ROMO-E-M	ROMO-E-P, ROMO-E-M
Part Number	ROMO-PPCB-1280-0000	ROMO-PPCB-1260-0000

Performance Chart and Ordering Information



Motor/Driver Part Configurations — All Six Variants

PART NUMBERING

ROMO	Material	Encoder	Driver	Firmware	Kit	Customisation
ROMO	P011	1	2	8	1	0000
ROMO	P011 = Plastic M012 = Anodized Aluminum	0 = without 1 = with	3 = 7.5V 2 = 5V	7 = Open Loop 8 = Closed Loop	0 = Motor Only 1 = Eval Kit	0 = Hollow Shaft 1 = Solid Shaft

ROMO-P011-1281-0000: ROMO Series, Plastic, with Encoder, 5V Driver, Closed-Loop Firmware, Hollow Shift.

MOTOR CONFIGURATIONS

Model	Enclosure	Encoder	Torque	Resolution	Max Speed	Power Supply	Part Number	Kit Available
ROMO-P	Plastic	Without	≥ 4 mNm	>30 µrad	> 600 RPM	7.5 V DC	ROMO-P011-0370-0000	✓
ROMO-M	Anodized Aluminum	Without	≥ 4 mNm	>30 µrad	> 600 RPM	7.5 V DC	ROMO-M012-0370-0000	✓
ROMO-E-P	Plastic	With	≥ 4 mNm	>30 µrad	> 600 RPM	7.5 V DC	ROMO-P011-1370-0000	✓
ROMO-E-M	Anodized Aluminum	With	≥ 4 mNm	>30 µrad	> 600 RPM	7.5 V DC	ROMO-M012-1370-0000	✓

PART NUMBERS & EVALUATION KIT DETAILS

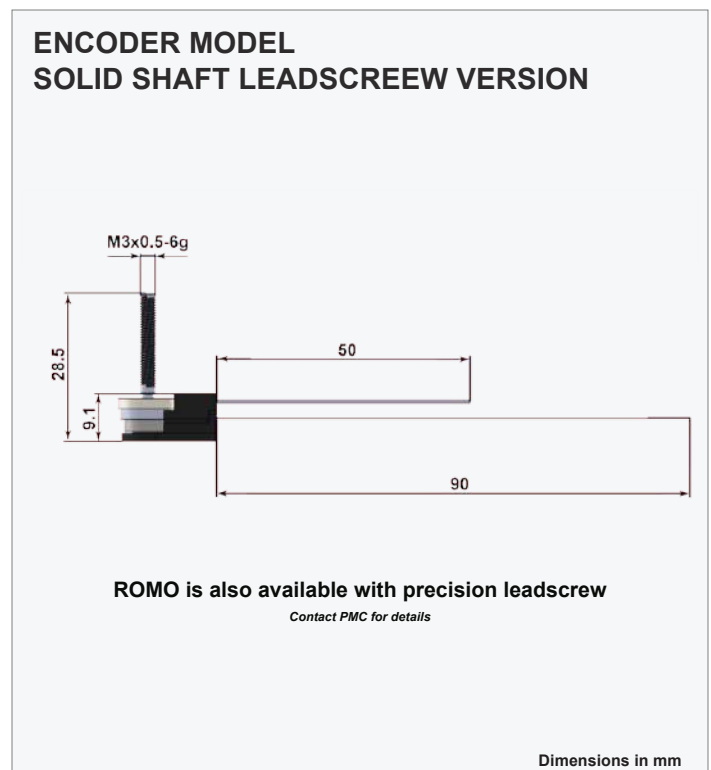
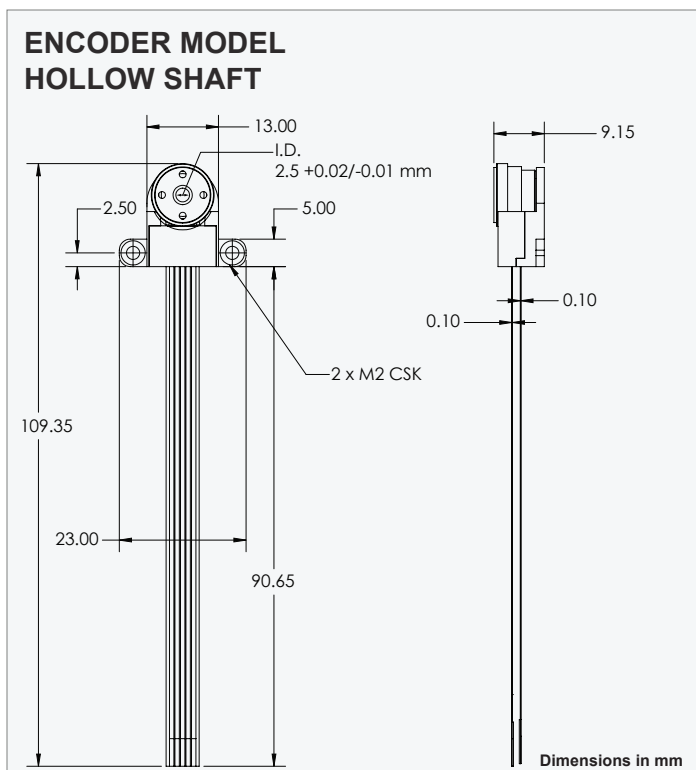
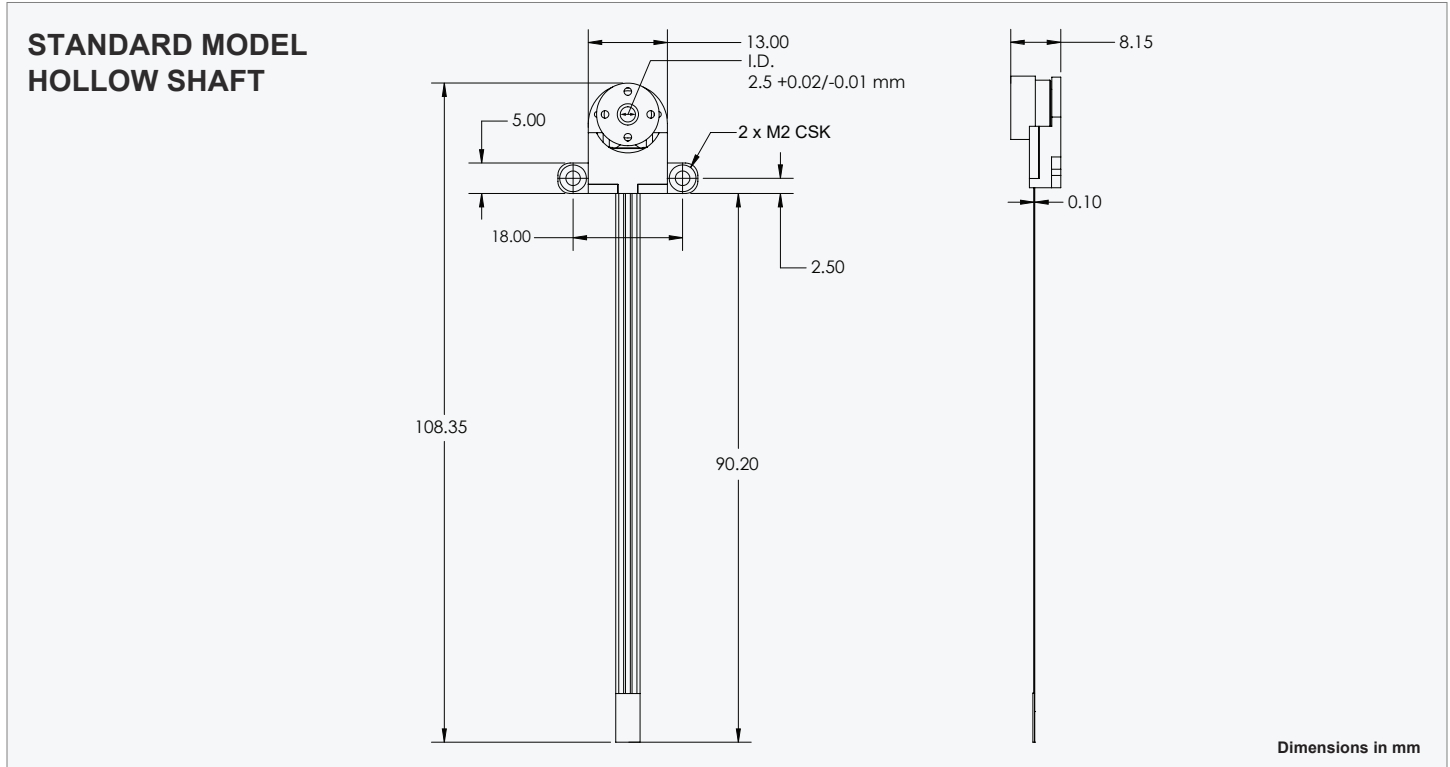
Model	Part Number	Kit Number	Evaluation Kit Description
ROMO	ROMO-P011-0370-0000	ROMO-P011-0371-0000	Includes ROMO motor, Plastic Enclosure, Electronic Driver PCB, 120/240 V AC to 7.5 VDC power adapter and cables.
ROMO-M	ROMO-M011-0370-0000	ROMO-M012-0371-0000	Includes ROMO motor, Anodized Aluminum Enclosure, Electronic Driver PCB, 120/240 V AC to 7.5 VDC power adapter and cables.
ROMO-E	ROMO-P011-1370-0000	ROMO-P011-1371-0000	Includes ROMO-E motor, Plastic Enclosure, Electronic Driver PCB, 120/240 V AC to 7.5 VDC power adapter and cables.
ROMO-E-M	ROMO-M012-1370-0000	ROMO-M012-1371-0000	Includes ROMO-E motor, Anodized Aluminum Enclosure, Electronic Driver PCB, 120/240 V AC to 7.5 VDC power adapter and cables.
ROMO-E-CL	ROMO-P011-1281-0000	ROMO-P011-1281-0000	Includes ROMO-E motor, Plastic Enclosure, Electronic Driver PCB, USB to Micro USB adapter cable and Python API.
ROMO-E-M-CL	ROMO-M012-1281-0000	ROMO-M012-1281-0000	Includes ROMO-E motor, Anodized Aluminum Enclosure, Electronic Driver PCB, USB to Micro USB adapter cable and Python API.

For custom inquiries, contact us at info@piezomotors.com

Mechanical Drawings

ROMO Hollow Shaft Series

Standard and Encoder Models | All Dimensions in mm



Why Piezo Motors?

ROMO Series vs. Conventional Motor Technologies



TECHNOLOGY COMPARISON

Feature	ROMO Series	DC Motor	Stepper Motor	Voice Coil
Zero holding power	✓ Zero current	— Continuous draw	— Current in hold	— Current in hold
Self-braking torque	✓ ≥ 5 mNm	— None	— Detent only	— None
Hollow shaft	✓ 2.5 mm I.D.	— Not standard	— Not standard	— N/A
Non-magnetic*	✓ Yes	— No	— No	✓ Yes
Sub-30 μ s response	✓ ~ 30 μ s	■ \sim ms range	■ Step limited	✓ Fast
Size / torque ratio	✓ Excellent	■ Good	■ Moderate	— Low
Silent operation	✓ Yes	■ Brushless: yes	■ Acoustic noise	✓ Yes
Positional resolution	✓ 30 μ rad	■ Encoder limited	■ Step limited	■ Sensor limited
Gearbox required	✓ No	■ Often yes	✓ No	✓ No
Voltage	✓ 7.5 V / 5 V	■ Varies	■ Varies	■ Varies

*Contact PMC for details

ABOUT PIEZO MOTOR COMPANY

Founded in 2024, Piezo Motor Company is at the forefront of innovation in the design and manufacturing of piezoelectric motors. Headquartered in the USA, we have a global reach through a network of international distributors, delivering cutting-edge technology to clients worldwide.

Our team comprises highly skilled experts with extensive experience in piezoelectric motor and actuator design and physics. We are passionate about harnessing the unique properties of piezoelectric materials to create motors that offer unmatched precision, efficiency, and reliability. Our solutions are tailored to meet the diverse needs of industries ranging from medical devices to aerospace and robotics.

We pride ourselves on our commitment to excellence and innovation, continuously pushing the boundaries of what piezoelectric technology can achieve. Our dedication to research and development ensures that we remain leaders in this dynamic field, providing our clients with the most advanced and effective solutions available. Join us on our journey as we revolutionize the world of motion control with piezoelectric technology.

CONTACT US: Order an evaluation kit or contact our engineering team to discuss your application.

Email: sales@piezomotors.com | **Web:** www.piezomotors.com | **Address:** Boca Raton, FL 33496

Location	Phone	Email
USA	+1 855 600 9666	sales@piezomotors.com
Europe	+44 7921 812476	kevin.thompson@piezomotors.com
Asia	+91 98606 24731	devendra@piezomotors.com

Applications



The ROMO series is engineered for demanding OEM applications where precision, compactness, and energy efficiency are critical. The hollow shaft, zero holding-power consumption, and sub-30 μ s response time open up design possibilities that are not achievable with conventional electromagnetic motors.

PHOTONICS & FIBER OPTICS

Polarisation control, variable attenuators, wavelength-selective switches.

MICROSCOPY & IMAGING

Objective turrets, polarisation rotators, confocal beam scanners.

MEDICAL & DIAGNOSTIC

OCT scanners, surgical robotics, drug delivery micro-pumps

SCIENTIFIC INSTRUMENTATION

Cryogenic stages, vacuum-compatible mechanisms, spectroscopy platforms.

ROBOTICS & AUTOMATION

Pick-and-place, collaborative robot joints, gripper mechanisms.

AEROSPACE & DEFENCE

Antenna pointing, gimbal drives, electro-optical payloads.



OPTICAL FILTER WHEELS

Fast, silent filter changes in microscopy and spectroscopy.



BEAM STEERING

Precision angular adjustment of optical paths and mirrors.



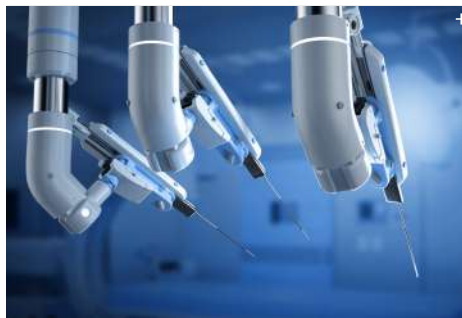
FIBRE ALIGNMENT

Sub- μ rad alignment of fibre optic components.



MICRO ROBOTICS

Compact direct-drive joints and end-effectors.



MEDICAL DEVICES

Drug delivery, lab-on-chip, and surgical robotics.



SEMICONDUCTOR

Wafer handling and mask alignment systems.

+ = Stock Image